



115th ANNIVERSARY PROJECT SOCIAL HALL RENOVATIONS



WAILUKU HONGWANJI MISSION - SOCIAL HALL

WEST ELEVATION
SCALE: 3/16" = 1'-0"

GYA ARCHITECTS, INC.
A DESIGN CORPORATION
DRAWN BY R.A. 09/17/13

DESCRIPTION

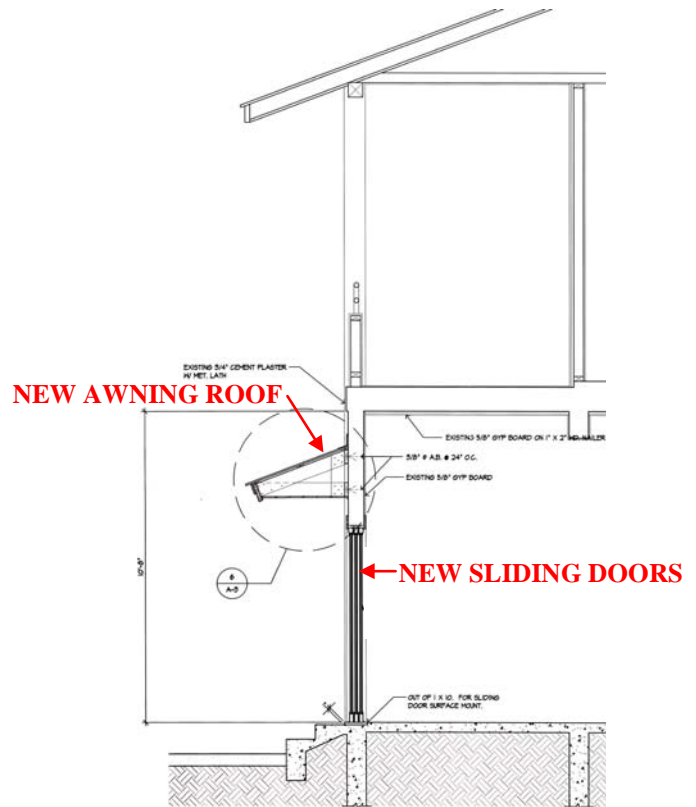
To commemorate its 115th anniversary, Wailuku Hongwanji Mission will renovate its social hall. The renovations involve removing the existing wood sliding glass doors and replacing them with commercial grade, aluminum sliding glass doors. The renovations also involve constructing an awning roof over the doors for weather protection. The awning roof consists of steel framing, metal roofing to match the existing roof, and a plastered cement board soffit.

PROJECT NEED

The existing doors have been in use for about 32 years and are in poor operating condition due to deterioration of the tracks and rollers. In addition, many of the locking thumbscrews are either broken or missing, and replacement parts are not available. The existing doors have reached their service life and should be replaced.

CONSTRUCTION COST

Wailuku Hongwanji Mission is seeking monetary gifts from temple members and friends to fund this project. The estimated construction cost of these improvements is \$100,000.



WALL SECTION AT SLIDING DOOR